

sensilis

Sensitive
Skin Lab



Skin Rescue [Barrier]

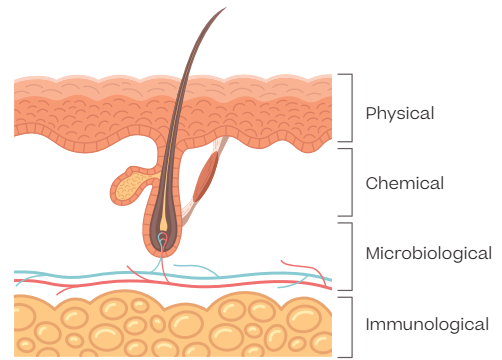
Deeply and visibly repairs
the skin barrier function

Dermatologically tested on sensitive skin

THE BARRIER FUNCTION, BALANCING THE 4 LEVELS

The health of the skin's barrier function depends on 4 levels:

- Physical
- Chemical
- Microbiological
- Immunological



SITUATIONS THAT COMPROMISE THE BARRIER FUNCTION

01_INFLAMMATORY DISTURBANCES

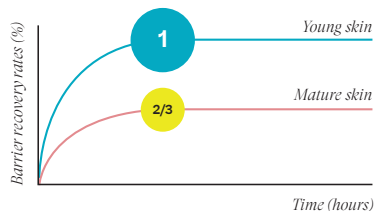
ACNE AND ROSACEA⁽¹⁾

- Microbiota disturbances
- Pathogenic microbial diversity
- Chronic inflammation

PERIORAL DERMATITIS⁽²⁾

- Microbiota disturbances
- Pathogenic microbial diversity
- Chronic inflammation

02_PHOTOAGING⁽³⁾



- 33% fat loss
- Slow-down in lipas enzyme activity.

- The composition of the skin's microbiota changes as we age.

03_MEDICAL/COSMETIC PROCEDURES

[Non-invasive procedures alter the barrier function and cause inflammation]

LASER TREATMENT

- Ablative laser resurfacing
- Inflammation

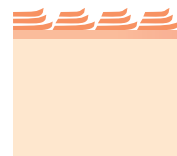
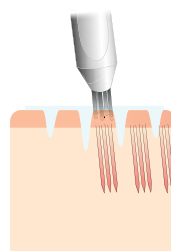
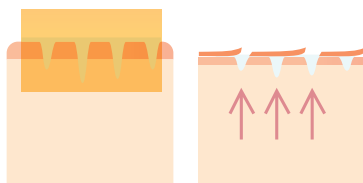
MICRONEEDLING & RADIO FREQUENCY

- Microlesions
- Inflammation

CHEMICAL PEELS

- Exfoliation of the superficial layer

LASER TREATMENT



SENSILIS INNOVATION:

A COMPLETE APPROACH TO RESTORING THE BARRIER FUNCTION

RECOVERY OF THE PHYSICAL BARRIER:

1.15% Hyaluronic Acid
[Elastomer, Medium MW,
Low MW, Acetylated]

Ceramides
[EOP, NS, NP, AS, AP 5]

RESTORING THE CHEMICAL BARRIER:

2% Plant-derived
Squalane
4% Shea Butter



IMMUNE SYSTEM STIMULATION:

α -glucan
oligosaccharide
0,1% Dipotassium
glycyrrhizate

BALANCED MICROBIOME:

α -glucan
oligosaccharide

SCIENTIFIC EVIDENCE

DEEP, VISIBLE RECOVERY
OF THE SKIN BARRIER⁽⁴⁾

-19,5% **TEWL** 30 min

-27,2% **TEWL** 24 h

MOISTURIZING ACTION⁽⁵⁾

+35% **MOISTURIZED** SKIN 30 min

SOOTHING EFFECT IN JUST 30 SEC⁽⁶⁾

ANTI-POLLUTION ACTION⁽⁷⁾



Images of recovery after Jessner peel in patients with sensitive skin.

(4) Clinical study conducted on 15 volunteers of both sexes aged 21 to 60 years old with normal and combination skin, sensitive after a Jessner peel. (5) Clinical study conducted on 15 volunteers of both sexes aged 23 to 57 years old with dry, normal, combination and oily skin. (6) Clinical study in 20 volunteers aged 20 to 83 years old with dry, normal, combination and oily skin. (7) In vitro test.



* Formulated to minimize allergy risk. ** Tested for the 5 main heavy metals responsible for 55% of skin contact allergies. Each less than one part per million. Small amounts can cause skin sensitivity.

POST-MEDICAL/COSMETIC PROCEDURE PROTOCOLS AFTER ABLATIVE LASER RESURFACING

1-10 DAYS

01 | Hygiene



CALM IN BALM
GENTLE CLEANSING MOUSSE

02 | Soothes & Restores



RECOVERY
KIT 10D

03 | Protection



PHOTOCORRECTION
[AR 50⁺]

RECOVERY IN 11-30 DAYS

01 | Hygiene



CALM IN BALM
GENTLE CLEANSING MOUSSE

02 | Prevent



SKIN D-PIGMENT
[SERUM ATX B3]

03 | Repair



SKIN RESCUE
[BARRIER]

04 | Protection



PHOTOCORRECTION
[HA 50⁺]



(1) Medgyesi B, Dajnoki Z, Béke G, Gáspár K, Szabó IL, Janka EA, Pólska S, Hendrik Z, Méhes G, Töröcsik D, Bíró T, Kapitány A, Szegedi A. Rosacea Is Characterised by a Profoundly Diminished Skin Barrier. *J Invest Dermatol.* 2020 Oct;140(10):1938-1950.e5.
(2) Dirschka T, Tronnier H, Fölster-Holst R. Epithelial barrier function and atopic diathesis in rosacea and perioral dermatitis. *Br J Dermatol.* 2004 Jun;150(6):1136-41. (3) Pat Y, Ogulur I, Yazici D, Mitamura Y, Cevhertas L, Kügükkase OC, Mesisser SS, Akdis M, Nadeau K, Akdis CA. Effect of altered human exposome on the skin and mucosal epithelial barrier integrity. *Tissue Barriers.* 2023 Oct 2;11(4):2133877.



SCAN ME

